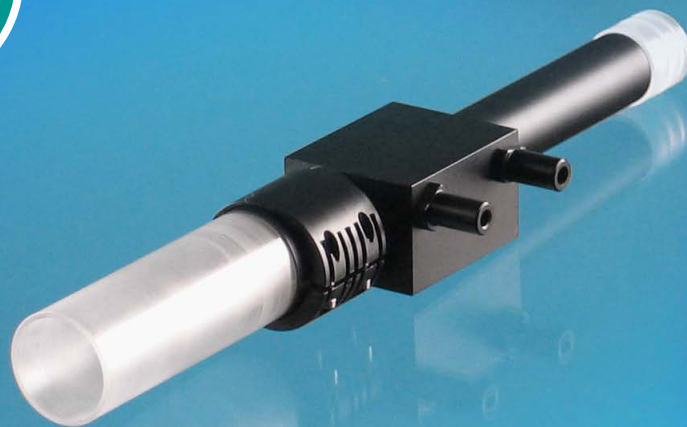


SAPHIRA TORCH

Absolutely essential for Si-detection in ICP-MS



SILICON-FREE DESIGN

With its long-time experience AHF has developed a silicon-free demountable torch and additional components for stringent sample introduction.

Silicon is a widespread element in nature and makes up more than 25 percent of the earth's crust. Therefore, ppb-trace analysis of this element has ultimate requests in its instrumental set-up.

APPLICATIONS

- :: Detection of Si elements in ultra-trace analysis with ICP-MS
- :: Si-transfer to human tissue by implants
- :: Analysis of process liquids in semiconductor industry
- :: Analysis of ultra-pure metals and materials (samples with HF)

WORLD OF ULTRA-PURE ICP



SET-UP OF SAPHIRA TORCH

The sapphire tubes are perfectly fixed by a holding made of a pure, inert and temperature resistant polymer

- :: Aerosol, plasma and gases contact no glass
- :: Easily adjustable to nearly all ICP-MS instruments
- :: Aerosol injectors made of sapphire or Pt
- :: Protection ring made of ceramics (for Pt-shield)



TANDEM COMBINATION

For completion of the inert sapphire torch design AHF offers a tandem combination of a cyclonic and double pass spray chamber

- :: High precision and low RSD
- :: Ultra clean and HF-resistant (PEEK / PFA)
- :: Best wash-out conditions
- :: Fits to common injectors and nebulizers



EXCELLENT SELECTION

AHF offers a stringent selection of Si-free sample introduction components to avoid any contamination or blanks:

- :: Nebulizers made of PFA, PTFE or PEEK
- :: Spray chambers made of PFA and PEEK
- :: O-ring free end caps and adaptors
- :: Gas fittings made of PFA and PEEK